

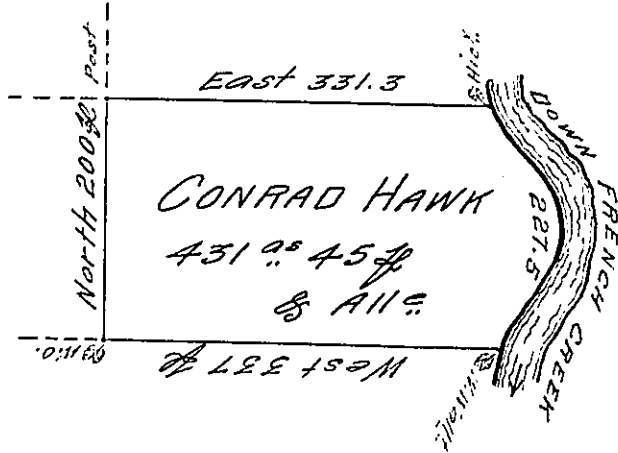
Stephel Siverlin

River Courses

- S 15° E 25.5
- S 37° E 92
- S 17 W 50
- S 23 W 24
- S 32 W 14
- S 51 W 22

227.5

Edw'd Fox



Robt Lumsstead

Situate on the West Side of French Creek  
 in All. County Containing 431 Acres and 45  $\frac{1}{2}$   
 and Allowance of Six  $\frac{1}{2}$  Cent for Roads &c Sur-  
 veyed the 10<sup>th</sup> Day of October 1794 In pursuance  
 of his improvement Dated the 10<sup>th</sup> Day of April 1795

W<sup>m</sup> Power D<sup>y</sup> Sr.

To Dan<sup>l</sup> Brodhead Esquire }  
 Surveyor General }

IN TESTIMONY that the above is a copy of the original remaining on file in  
 the Department of Internal Affairs of Pennsylvania, made  
 conformably to an Act of Assembly approved the 16th day of  
 February, 1833, I have hereunto set my Hand and caused  
 the Seal of said Department to be affixed at Harrisburg,  
 this Second day of August 1906

*Leach B. Brown*  
 Secretary of Internal Affairs.